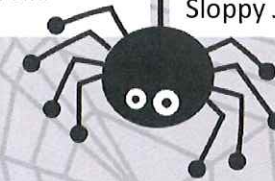


Monday	Tuesday	Wednesday	Thursday	Friday
<p>Spicy Chicken Patty on Bun 3 Sweet Potato Cubes Peas Fruit, Milk Hot Dog on Bun</p>	<p>Pulled Pork Nachos/ Salsa 4 Corn Cauliflower Fruit, Milk Pulled Pork Sandwich</p>	<p>Breaded Pork Patty/Roll 5 Mashed Potatoes/ Gravy Green Beans Fruit, Milk Hamburger on Bun</p>	<p>Sloppy Joes on Bun 6 Baked Beans Carrots Fruit, Milk Chicken Patty Sandwich</p>	<p>Pizza/Ranch 7 Cruncher Cup Romaine Salad Fruit, Milk Fish Sandwich on Bun</p>
10	FALL BREAK			14
<p>BBQ Chicken Sandwich 17 Onion Rings/Pickle Spear Green Beans Fruit, Milk Corn Dog</p>	<p>Santa Fe Rice Bowl/Salsa 18 Black Beans Corn Fruit, Milk Chicken Quesadilla/Salsa</p>	<p>Chicken Tenders/Roll 19 Au Gratin Potatoes Broccoli Fruit, Milk Hamburger on Bun</p>	<p>Chili Soup/ Cinnamon Roll 20 Carrots Celery Fruit, Milk Chicken Patty Sandwich</p>	<p>Pizza/Ranch 21 Lettuce Salad/Tomatoes Sweet Potato Fries Fruit, Milk, Jello Crispy Chicken Salad/Roll</p>
<p>Spicy Chicken Patty on Bun 24 Baked Beans Fries Fruit, Milk Grilled Cheese Sandwich</p>	<p>Beefy Nachos/ Salsa 25 Corn Carrots Fruit, Milk Chicken Quesadilla/Salsa</p>	<p>Meatloaf/Garlic Knot 26 Mashed Potatoes Broccoli Fruit, Milk Breaded Pork Patty on Bun</p>	<p>Spaghetti/ Roll 27 Romaine Salad Mixed Vegetables Fruit, Milk Breaded Mozzarella Sticks/Marinara</p>	<p>Pizza/Ranch 28 Carrots Green Beans Fruit, Milk, Dessert Sloppy Joes</p>
<p>Nightmare Nuggets/"Broom" sticks 31 Freaky Fries Terrible Trees Frightful Fruit, Monster Milk Gravedigger Pudding Haunted Hamburger</p>				



Offer vs Serve is available again this year. Student may choose only 3 components to qualify as a reimbursable meal as long as they take 1/2 C fruit or vegetable and 2 full components. See guidelines in cafeteria. Menu is subject to change. This institution is an equal opportunity provider.